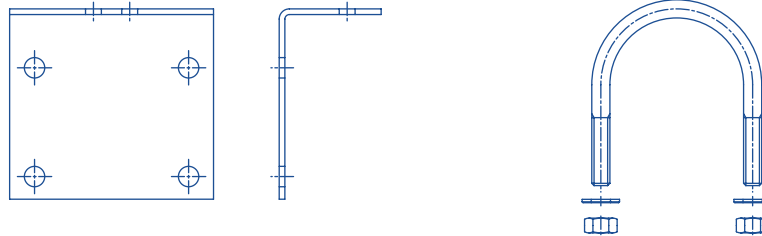
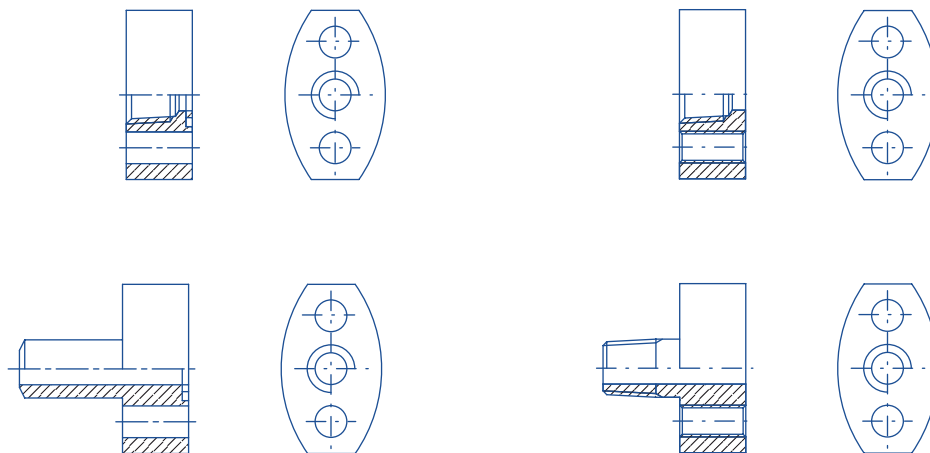


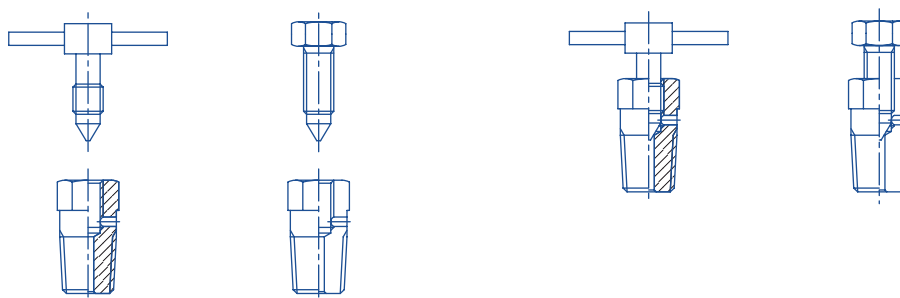
Mounting bracket is a useful accessory to install manifold and instrument on a 2" pipe stand. It is made in stainless or carbon steel and supplied with relative U-bolt, washers and nuts.



Oval flanges allow a simple and trouble-free manifold installation. They also provide an ideal solution in welded connection, allowing flexibility to remove the manifold by releasing the bolts.



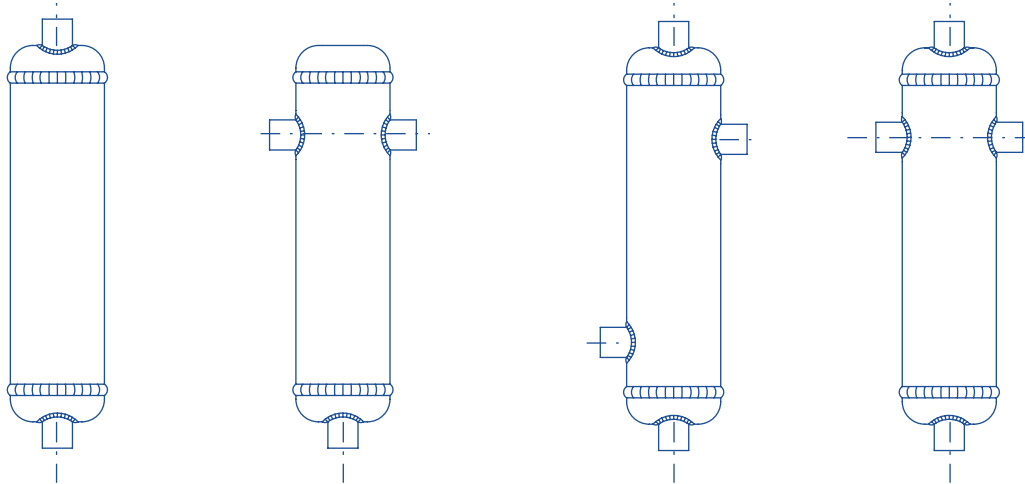
Bleed valve or screw provide an easy and economical solution for venting or bleeding.



Condensing pots are used in steam metering lines to cool and condensate steam.

They are made from seamless pipe of different size ( 3", 4", 6", ... ), thickness ( SCH 40, SCH 80, SCH 160, ... ) and material ( A106 Gr.B, AISI 316, ... ).

Ends connection are 1/2" NPT-F or SW as per Customer's specification.

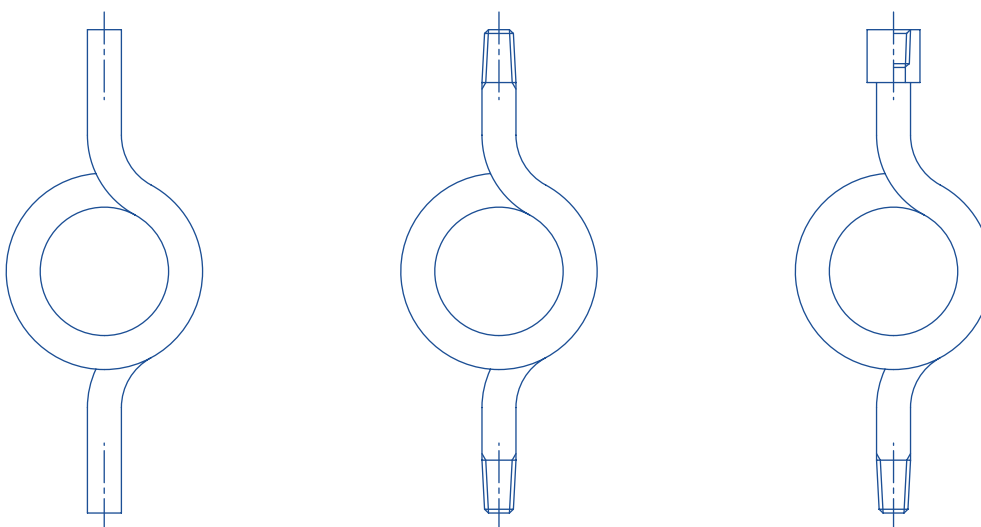


Coiled pipe syphons are used for steam pressure measurement and are generally connected between pressure gauges and process tap to prevent live steam coming in direct contact with instruments.

Further, these syphons allow a good heat dissipation, protecting instruments from high temperature.

They are made from 1/2" seamless pipe of different thickness ( SCH 40, SCH 80, SCH 160, ... ) and material ( A106 Gr.B, AISI 316, ... ).

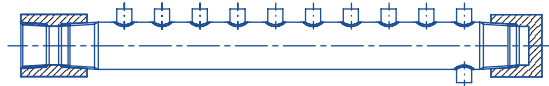
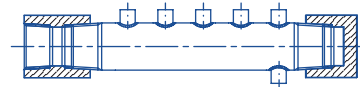
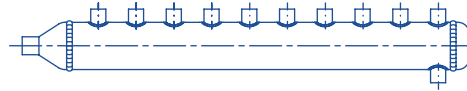
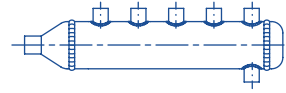
Ends connection are 1/2" male and/or female ( NPT, PE, SW, ... ).



Air feed headers are used to centralize several connections in instrument air distribution system. They can be supplied fitted with ball or needle valves on inlet, outlets and drain.

They are made from 1 1/2" seamless pipe of different size thickness ( SCH 40 or SCH 80 ) and material ( A106 Gr.B, AISI 316, ... ). Caps could be welded or threaded.

Ends connection number and size are as per Customer's specification.



# ACCESSORIES

# GAS DISTRIBUTION MANIFOLD

Distribution manifold are suitable for a wide range of process applications in panel, cabinets and field. They are easily mounted on wall or pipe stand and they can be supplied fitted with ball or needle valves on outlets.

They are made from bars in different material ( A106 Gr.B, AISI 316, ... ) with a working pressure up to 6.000 psi.

Ends connection number and size are as per Customer's specification.

